

Immanuel Lutheran Senior Living Community KALISPELL, MONTANA
AG Architecture, Inc. WAUWATOSA, WISCONSIN



*Immanuel Lutheran Communities
 Rehabilitation and Therapy Cottage
 Kalispell, MT*



Immanuel Lutheran Communities has served the senior living marketplace in scenic Kalispell, Montana for more than 50 years. It is the first step toward implementing a new master plan to reinvent long-term care on this campus.

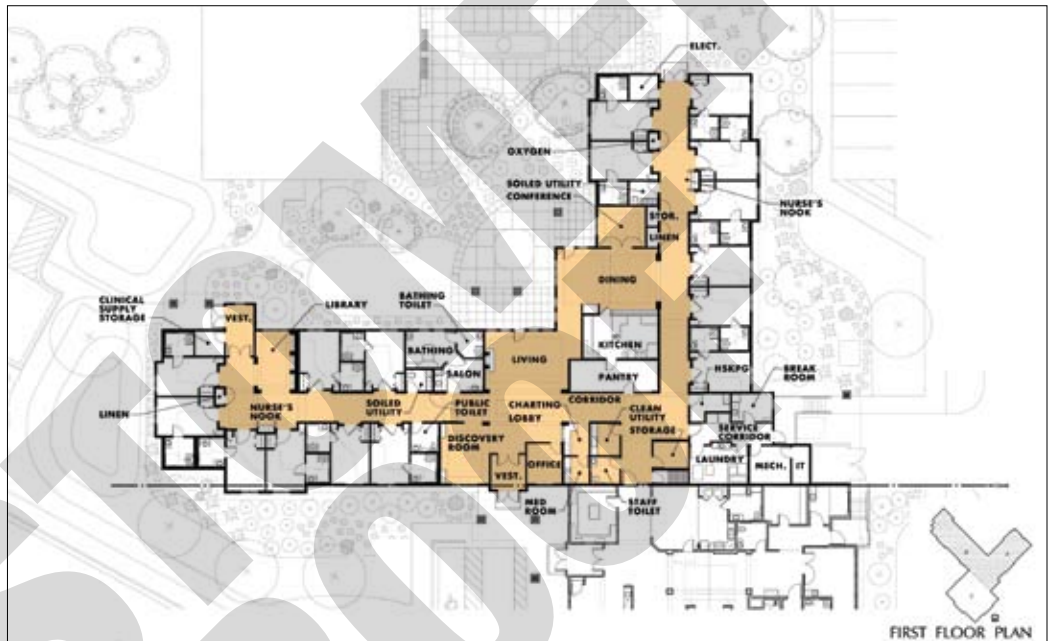
Receiving Honorable Mention for Post-Acute/Rehabilitation design, the new Rehabilitation Center, which began construction in fall 2010, features a freestanding 16-resident Rehabilitation Cottage and a unique 5,140-square-foot Therapy Pavilion. The new building combines cutting-edge practices in both rehabilitation and person-centered care to create an extraordinary facility—a real architectural experience amidst the breathtaking backdrop of Glacier National Park. Voluminous spaces and finishes inspired by the natural surroundings blend both a residential and hospitality appeal that make this cottage and therapy center the antithesis of the typical rehab facility.

The Rehabilitation Cottage includes smaller scale, intimate spaces that offer residents choices. Personal dignity is maintained in each of the 16 private rooms with individual bathrooms and showers. Each room includes a ceiling lift system to facilitate transporting non-ambulatory residents to the toilet and shower. The cottage also offers social spaces, opportunities for residents to engage in the food preparation process, abundant natural light, outdoor spaces, and unobtrusive staff support areas.

For the Therapy Pavilion, the design team was consistently pushed to transcend the stereotypical image of a space full of acoustic tile ceilings with fluorescent lights. Now, voluminous spaces and abundant natural light become the new standard. The design takes cues

from the surrounding scenery, using stone, wood, and other residential-inspired materials, to add warmth and create a unique rehabilitation experience in each space. A variety of small rooms provide residents the opportunity for more privacy during treatments, while the larger, more public physical therapy gym creates a fitness center atmosphere. An ADL apartment along with state-of-the-art equipment, such as the ceiling lift and harness over the treadmill and parallel bars, and the aquatic therapy pool were also incorporated into the design.

The providers goal – “to provide the best practice therapies available in a resort-style, retreat setting that allows guests to recuperate and gain strength and stability to return home and to meet the changing needs of the community” has been successfully achieved.



PROJECT CATEGORY: Project in Progress
CHIEF ADMINISTRATOR: Jeff Evans, CEO
FIRM: AG Architecture, Inc., (414) 431-3131
DESIGN TEAM: Architect (AG Architecture); Interior Designer (Studio 121); Marco DePalma, Owner's Representative (The Belaire Group, LLC)
PHOTOGRAPHY: Orchid 3D (Therapy Gym, Sitting Area); AG Architecture, Inc. (floor plans, illustrations)
NUMBER/TYPE OF HOUSING UNITS: 16 Skilled Nursing units
TOTAL AREA (SQ. FT.): 18,120
TOTAL CONSTRUCTION COST (EXCLUDING LAND): \$3,129,928
CONSTRUCTION COST/SQ. FT.: \$173
COMPLETION: January 2012