



THE
Villas
— AT BUFFALO HILL —
A Ministry of Immanuel Lutheran Communities

Personal Proposal

KINTLA ONE BEDROOM 1.5 BATH WITH BALCONY

VILLAS #2006

June 19, 2020





The Villas at Buffalo Hill offers a fresh perspective as Northwest Montana's only Life Plan Community, allowing you to stay in control of your finances through a **75% Refundable Entrance Fee or Traditional Entrance Fee option** without the hassles of home maintenance... while staying in control of your healthcare choices, which allows you to stay in control of your retirement.

Some of the Benefits of The Villas for you to consider:

- True Independence – surrounded with many amenities offering peace of mind whether you need personalized healthcare provided by our partners or if you need assistance with your apartment home.
- Fine dining in The Claremont and Savory restaurants
- Casual dining in the Wooden Nickel Bistro & Lounge featuring a full-service bar
- Concierge services such as assisting with deliveries and transportation
- 24-hour security and emergency response system
- Weekly housekeeping



A Plan in Place

All of these benefits, put together, help you and your family have a plan for whatever the future may bring. Having a plan in place, before it is needed offers an invaluable sense of assurance for everyone.

This is a Proposal for Kintla #2006 One Bedroom 1.5 Bath with Balcony 850 Square Feet

Traditional Entrance Fee	\$158,570	
75% Refundable Entrance Fee	\$243,950	
Monthly Fees	\$ 3,020	plus \$750 for a second person*
Community Fee (One-Time Charge)	\$ 3,020	

***Entrance Fee for a second person (one-time charge) \$8,500**



- *30 complimentary days of ILC health care services
- *10% off skilled nursing care
- * Heated Indoor Pool & Hot tub
- * Fitness Center
- * Auditorium/Chapel
- * Spa & Salon
- * Under Building Garage Parking
- * Private Storage 5'x6'x10high

Kintla # 2006 ADA Design

- Crème Color Scheme
 - Gas Fireplace
- Stainless Steel Appliances
- Counter-top Microwave
- All-in-One Washer / Dryer



Room Dimensions

Bedroom: 11'-4" x 12'-10" Bathroom: 6'-10" x 14'-0"
Kitchen: 10'-6" x 9'-6" Powder Room: 6'-10" x 4'-4"
Great Room: 13'-7" x 23'-0" Balcony: 18'-8" x 8'-0"





Overlooks West Valley







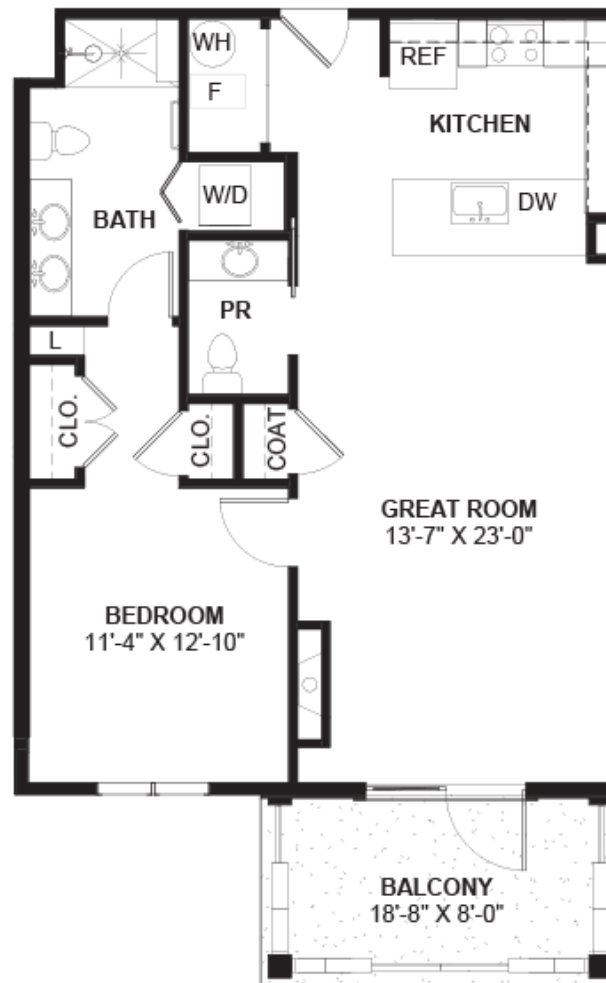
Note: Microwave is on the counter, not above the stove





850
SQUARE
FEET

ONE BEDROOM, ONE AND A HALF BATH



THE
Villas
— AT BUFFALO HILL

A Ministry of Immanuel Lutheran Commun

40 CLAREMONT STREET
KALISPELL, MT 59901
406-752-9624
WWW.ILCORP.ORG

Floor plan is not to scale and subject to change. Square footage is approximate.



COLOR SCHEME 3 -- CREME



entry ceiling light fixture



living ceiling light fixture



kitchen track light fixture



vanity light fixture



bar pendant



wall paint



trim paint



carpet



countertops



cabinet finish



kitchen faucet



bathroom faucet



typical hardware



kitchen + bathroom tile



shower tile

6



24" Compact Large Capacity All-In-One Washer/Dryer Combo

WM3477H_



ALL IN ONE

LG's all-in-one washer and dryer combo does it all in just one machine. It's great for those who want to be able to do laundry at home but do not have an external venting source which conventional dryers require. Perfect for homes, apartments, businesses and vacation homes where space is valuable.

SPECIFICATIONS

- 2.3 cu. ft. Large Capacity with NeveRust™ Stainless Steel Drum
- Direct Drive Motor with 10-Year Limited Warranty
- 1,400 RPM
- 9 Washing Programs
- 5 Temperature Settings (All Cold Rinses)

STYLISH DESIGN

- Upfront Electronic Control Panel with Dual LED Display and Dial-A-Cycle™
- Chrome Rimmed Glass Door

INNOVATIONS

- Ventless Condensing Drying
- NSF Certified Sanitary Cycle
- Water Plus Option
- StainCare™ Option
- 6Motion™ Technology
- SmartDiagnosis™
- TrueBalance™ Anti-Vibration System
- LoDecibel™ Quiet Operation
- SenseClean™
- Delay Wash (Up to 19 hours)
- 10" TiTub™



The Perfect Fit

This compact washer and dryer combo is perfect for apartments, condos or small spaces. And at just 24 inches in width, it's the perfect fit for your lifestyle.



Large Capacity

Towers of towels, piles of sweatshirts, and a mountain of jeans? Go for it. Large capacity (2.3 cu.ft.) tub lets you do more laundry in fewer loads. That's time saved and sore backs avoided.

Ventless Condensing Drying System

This combo washer and dryer is ideal if you don't have an external venting source, which is required by most conventional dryers. Perfect for homes, apartments, businesses and vacation homes where space is valuable.

