



Buffalo Hill — TERRACE —

A Ministry of Immanuel Lutheran Communities

The Camas
NEW APARTMENT ONE BEDROOM ONE BATH WITH DEN





Buffalo Hill Terrace offers a fresh perspective as Northwest Montana's only Life Plan Community, allowing you to stay in control of your finances through a **Traditional Entrance Fee option** without the hassles of home maintenance... while staying in control of your healthcare choices, which allows you to stay in control of your retirement.

Some of the Benefits of Buffalo Hill Terrace to consider:

- True Independence – surrounded with many amenities offering peace of mind whether you need personalized healthcare provided by our partners or if you need assistance with your apartment home.
- Fine dining in The Claremont and Savory restaurants
- Casual dining in the Wooden Nickel Bistro & Lounge featuring a full-service bar
- Concierge services such as assisting with deliveries and transportation
- 24-hour security and emergency response system
- Weekly housekeeping



A Plan in Place

All of these benefits, put together, help you and your family have a plan for whatever the future may bring. Having a plan in place, before it is needed offers an invaluable sense of assurance for everyone.

This is a Proposal for The Camas, One Bedroom One Bath with Den 800 Square Feet

Traditional Entrance Fee Option

| | | |
|--|---|--|
| Traditional Entrance Fee | \$138,920 | |
| | (No Refundability After 48 Months) | |
| Monthly Fees | \$ 3,172 | *plus \$750 for a second person |
| Community Fee (One-Time Charge) | \$ 3,172 | |

*Entrance Fee for a second person (one-time charge) \$8,500



- *30 complimentary days of ILC health care services**
- *10% off skilled nursing care**
- * Heated Indoor Pool & Hot tub**
- * Fitness Center**
- * Auditorium/Chapel**
- * Spa & Salon**
- * Reserved Carport**



- Espresso Color Scheme
- Double Door Refrigerator
 - Electric Range
 - Garbage Disposal
 - Dishwasher
- Granite Kitchen Countertops
- Remodeled Bathroom with Granite Countertops and Double Sink

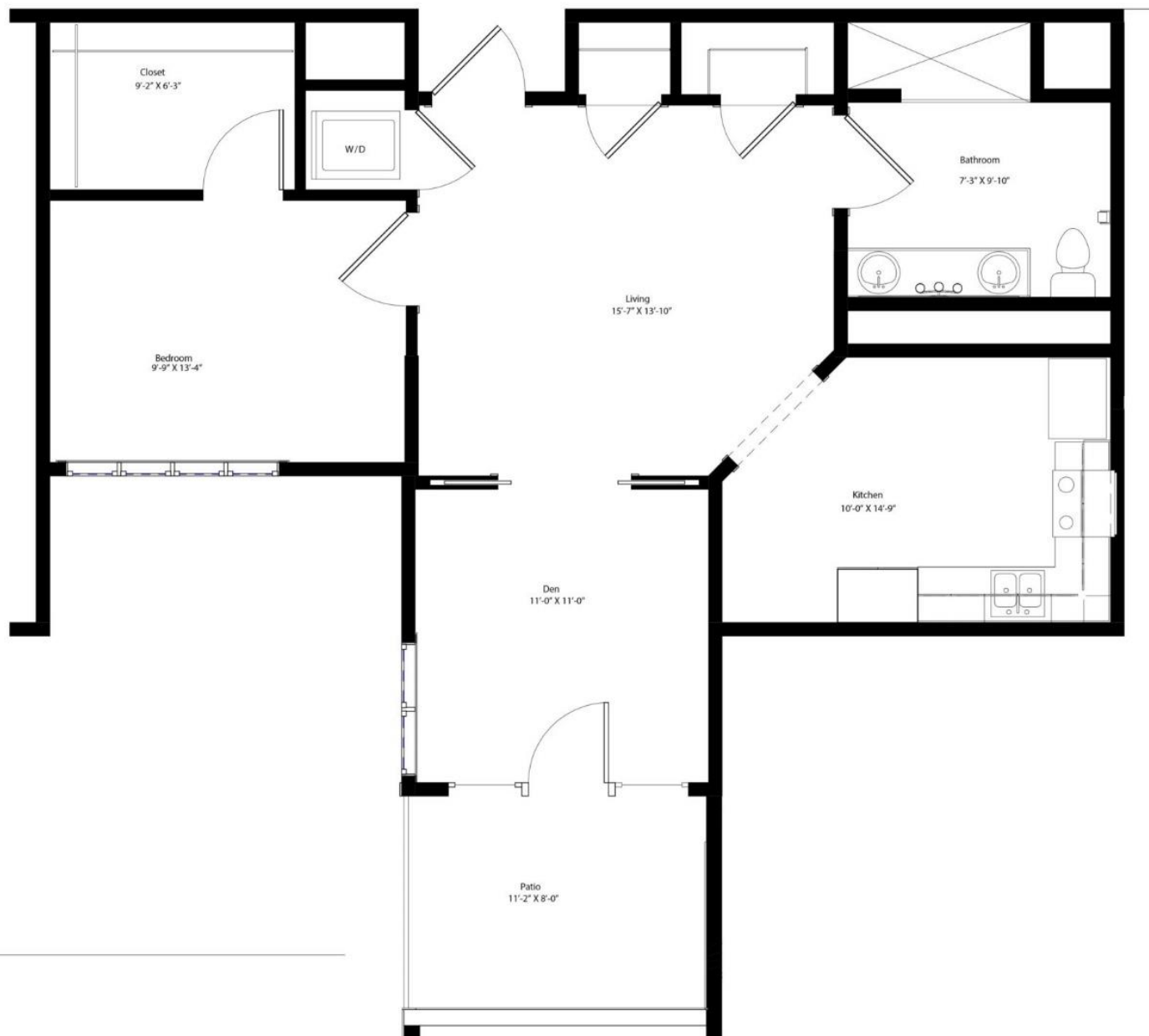
Room Dimensions

Bedroom: 9'-9" x 13'-4" Bathroom: 7'-3" x 9'-10"
Kitchen: 10'-0" x 14'-9" Walk-In Closet: 9'-2" x 6'-3"
Den: 11'-0" x 11'-0" Patio: 11'-2" x 8'-0"









1

1/2" = 1'-0"

Immanuel Lutheran Communities Buffalo Hill Terrace
 40 Claremont St, Kalispell, MT 59901



06/10/2020

Color Scheme -- Espresso



living ceiling light fixture



entry ceiling light fixture



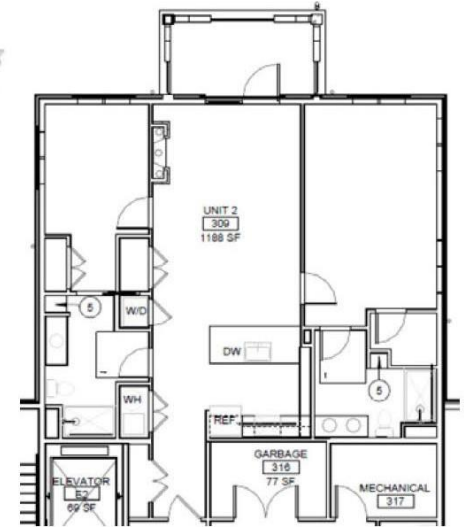
kitchen ceiling light fixture



kitchen faucet



bar pendant



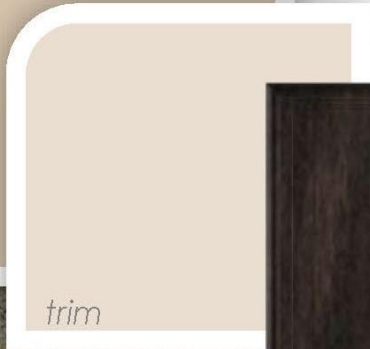
countertop



wall



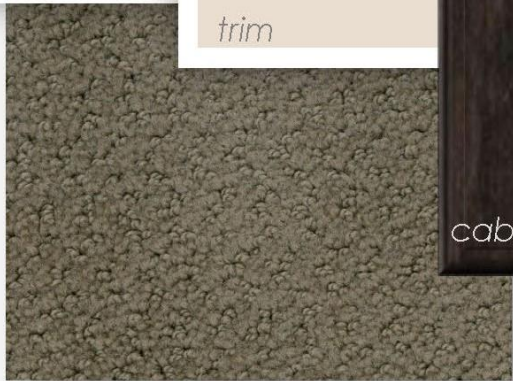
trim



cabinet finish



carpet



kitchen and bathroom tile



vanity light fixture



typical hardware



bathroom faucet